

Job Description

Position Title: *Scientist – Land & Soils*

Responsible to: Team Leader – Land & Water

Responsible for: Students
Contractors and Consultants

Relationships: Environment Quality, Resource Management and Land Management staff
Business Information and Technology Services team
Other Taranaki Regional Council staff, as required
Central government departments and agencies
Other regional and local authority staff
Resource consent applicants, holders and their consultants
Research agencies, consultants and science providers
General public, iwi/hapū and special interest groups

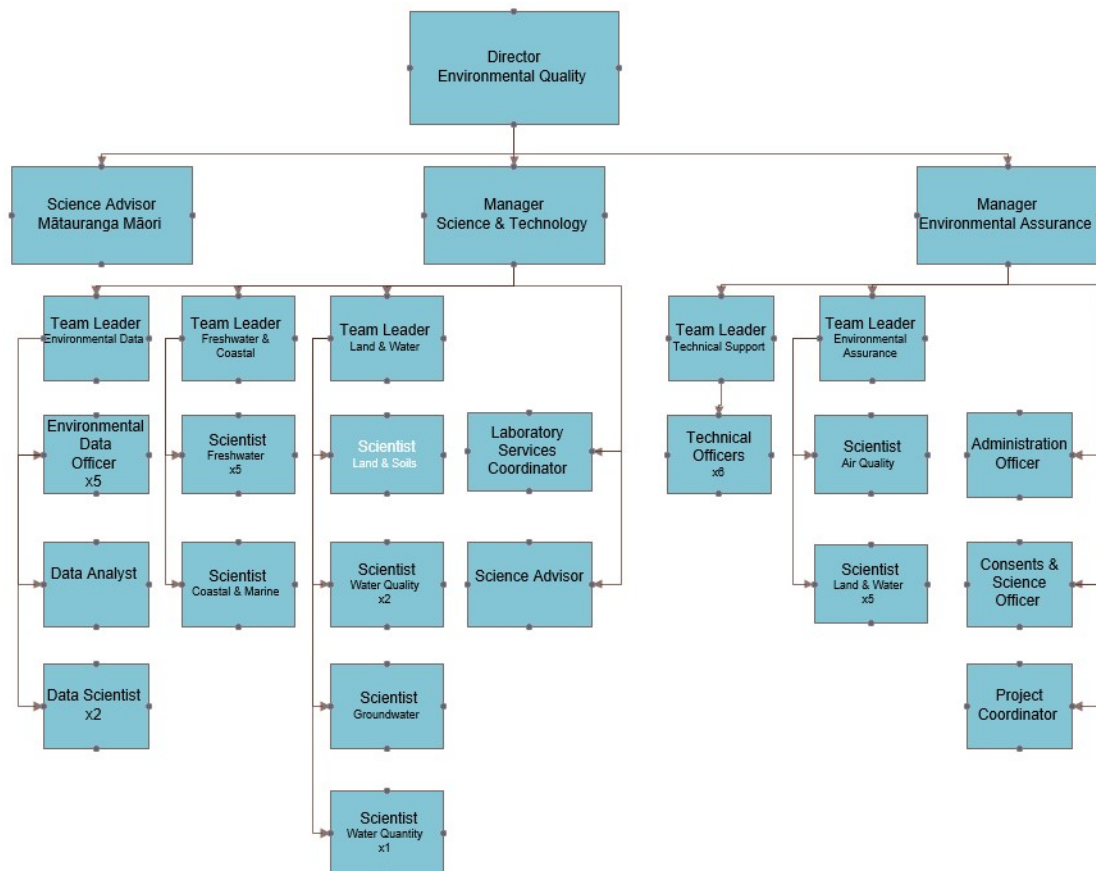
Salary: A market salary for the position will be negotiated, depending on experience, qualifications and aptitude.

Location: Stratford, although travel throughout the region will be required as part your daily duties

Job Context: Permanent Full Time

Position Number: TBC

Holder: Vacant



Role of a Scientist – Land & Soils

The role of Scientist – Land & Soils is to contribute specialist expertise, knowledge and technical leadership in the areas of land use, soil science and sedimentation processes. You'll use your skills to develop, coordinate and deliver environmental monitoring and reporting programmes, along with scientific and environmental investigations, and contribute specialist input across a wide range of Council activities. You'll do this working in close collaboration with staff across the Council, providing technical advice and guidance that will inform both regional and national policy development and implementation, and support the wider Environment Quality group in the delivery of state of environment and compliance monitoring and reporting

Key Skills

Qualification

- Required: a tertiary qualification in physical sciences, with a speciality in soil science, geomorphology, natural resource management, or a related field
- Desired: at least 3 years relevant work experience in scientific monitoring and investigation design, techniques, data analysis and technical report writing

Knowledge

- Technical and practical proficiency and competency in soil and sediment science, with a sound understanding of the impacts of land use activities on freshwater, coastal and marine environments
- An ability to design, implement and manage environmental monitoring and research programmes
- Computer literacy, including confidence in a range of Microsoft Office products, the use of environmental databases (particularly Iris and Hilltop) and ESRI GIS
- Good data management skills, with a high level of accuracy and meticulous attention to detail
- Familiarity with the Resource Management Act 1991, the National Policy Statement for Freshwater Management 2020 (NPS-FM) and relevant regulations and national standards would be advantageous
- Understanding and appreciation of Maori cultural and spiritual values and protocols

Skills / Experience

- Able to demonstrate experience in environmental monitoring and reporting, preferably in a local government environment
- Ability to critically analyse environmental data related to land use, soils and sediment, and water quality, including the use of statistical methods. Experience using 'R' or a similar programming language will be viewed favourably
- Strict attention to quality control, data management and accurate record keeping
- Strong skills in written and verbal communication, able to convey and interpret data/information to meet a diverse range of audience needs
- Good organisation and time management skills with an ability to multi-task, delivering complete solutions within agreed timeframes
- Able to quickly grasp new processes and technologies, and solve problems effectively
- Health and safety practices for field work
- Experience working in isolation, in remote locations, and working in and around streams and large rivers

Personal Attributes

- Team player with a collaborative approach, proven interpersonal and conflict resolution skills
- Practical problem solver, with good judgement and initiative

- Results oriented, with finely tuned attention to detail and time management
- Good level of fitness and eyesight
- Confident working in and around water
- Innovative and self-motivated, committed to continuous improvement
- Willingness to adapt
- Customer focussed

Tasks

- To oversee the delivery of Council's monitoring and evaluation of sediment and soil health, and assessment of environmental effects of land use and sedimentation on fresh water and other receiving environments
- Advise on the design, implementation and reporting of state of the environment and compliance monitoring and research programmes/projects relating to land use, soils and sediment including: design and audit, day to day programme management, assigning and undertaking inspections/investigations, sampling, record keeping, database entries, and collation of information, analysis of data and interpretation of results, and preparation of reports and dissemination of results to internal and external parties, including effective recommendations
- Proactively identify knowledge gaps or research needs in relation to land and soil and the impacts of land use and sedimentation on receiving water bodies, and scope programmes of monitoring, further investigations or analyses to address these
- Provide robust scientific expertise and support to a professional standard in the form of specialist advice and evaluation of strategy and policy development, submissions, evidence for hearings and prosecutions, consent application assessments, and monitoring programme design and development, for the Council, Policy and Planning, Inspectorate and Consents teams
- Advise and collaborate with Land Management Officers (LMOs) and scientific staff regarding effective mitigation of the effects of sediment on the well-being of water bodies and freshwater, coastal and marine ecosystems
- Provide guidance to resource users and the public on matters of soil health, land use and sediment generation, delivery, impacts and management
- Effectively communicate complex science to a range of technical and non-expert audiences
- Foster constructive relationships with external partners and parties who are involved and affected, including iwi/hapū, land owners and resource users, and community members
- Maintain and develop specialist knowledge relevant to this role through research in relation to best practice, current scientific advancements, and statutory requirements
- Delivery of products and/or services on behalf of the Council that meet the required standard
- Any other task and duties as required by the Manager – Science & Technology, Director – Environmental Quality, or the Chief Executive

Special requirements

- May be required to work outside normal working hours including weekends
- Will be required to work in isolation, and in/around streams and large rivers, lakes and beaches
- Must be able to undertake the physical requirements of the position, which can include heavy lifting, and working in uneven and steep terrain
- May be required to work with hazardous and toxic materials
- May be expected to work under conditions in which personal risk may be incurred and safety procedures must be adhered to in accordance with the Council's Policies and Procedures

Health and Safety

The Taranaki Regional Council is committed to a process of continuous improvement in order to achieve excellence in the management of health and safety at all of our workplaces. We recognise the positive impact that the values and benefits of enhanced health and safety bring to the organisation, our employees and our communities. There are two key points to health and safety:

- The safety of our people and the communities in which we operate always comes first.
- We are all empowered and expected to challenge any unsafe situation at work.

We will achieve these by:

- Building culture
- Aiming for zero harm
- Taking reasonable practicable steps
- Managing contractors
- Communicate
- Develop knowledge
- Investigate and learn
- Ensure competence to do the job

Mission and Key Messages

Our Mission:

To work for a thriving and prosperous Taranaki by:

- Promoting the sustainable use, development and protections of our natural and physical resources
- Safeguarding Taranaki's people and resources from natural and other hazards
- Promoting and providing for significant services, amenities and infrastructure
- Representing Taranaki's interests and contributions to the regionally, nationally and internationally community

We will do this by leading with responsibility, working cooperatively, encouraging community participation, and taking into account the Treaty of Waitangi.

Our Key Messages:

The Taranaki Regional Council works with the Taranaki community:

- Improving lifestyles
- Supporting livelihoods
- Taking Taranaki forward

Values:

We are committed to:

- Public service
- Service First
- Improving the quality of our performance
- Working safely

- Effective communication and teamwork
- Initiative and the right to make mistakes
- Accountability and results
- Presentation, respect and care
- Job satisfaction